

# Congruence

---

Alex Alsheimer

9/12/2022

## Decisions:

You enter a room and there are two doors. Which door do you choose?

door A

door B

Inside the door is a treasure chest. Do you take the treasure?

yes

No

**Decisions:**

Door A

Inside the door is a treasure chest. Do you take the treasure?

yes

No



Decisions:

Door A

Yes

Inside the door is a treasure chest. Do you take the treasure?

yes

No



**Decisions:**

Door A

No

Inside the door is a rabid  
dog, do you fight it off or flee?

Fight

Flee

Decisions:

Door B

Inside the door is a rabid  
dog, do you fight it off or flee?

Fight

Flee



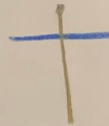
Decisions:

Door B  
Fight

You run into the other door  
to escape the dog. Inside this  
door is a treasure chest. Do  
you take the treasure?

Yes

No



## Decisions:

Door B

Flee



You run into the other door to escape the dog. Inside this door is a treasure chest. Do you take the treasure?

Yes

No



## Decisions:

Door B

Flee

No

You run into the other door to escape the dog. Inside this door is a treasure chest. Do you take the treasure?

Yes

No

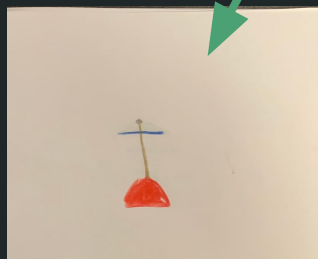
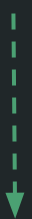
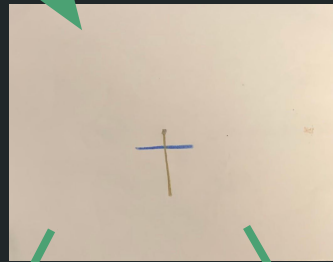
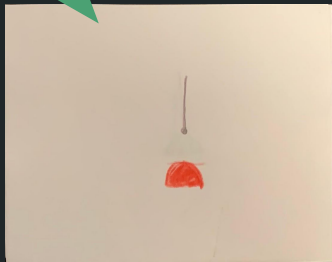
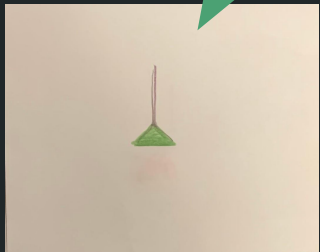
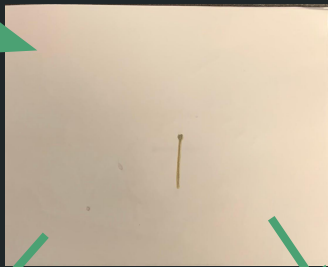
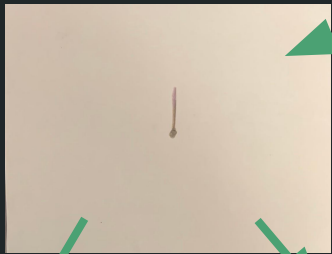


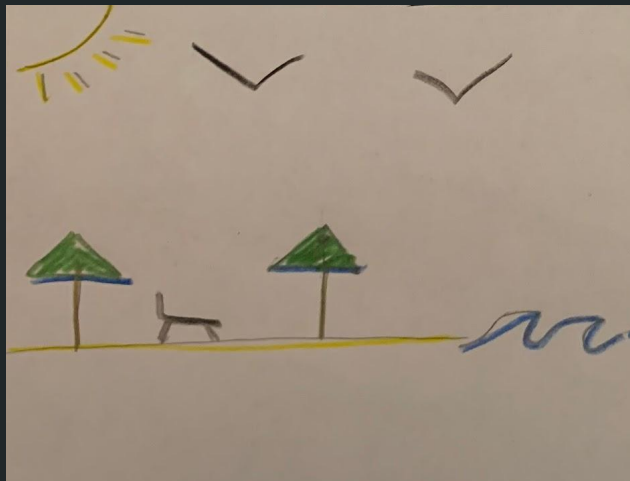
## Decisions:

Door B

Flee

Yes





# About the Project

- Unity development
- All unique assets (made during development)
  - Original art
  - Original story
- Allows for users to create their own work of art within parameters
- Simple interface
- Potential expansion: multiplayer mode